

NEWSLETTER

December 2008

Well, another year is just about over and it seems like just a short time ago Loving Paws moved into the building on Sheridan road. My lease is just about up, and due to circumstances beyond my control, I will be moving out of the Sheridan Road location on December 20th. I know a lot of you have given me some awesome tips on places you have seen, and I can tell you that I check out every lead I get. The hard part about this type of business is the zoning required and the noise factor. If a neighbor calls the police about barking dogs I can be issued a noise citation. Those can become expensive. Repeated citations can close the business. Yes, it makes it tough, but I know that a place will come up. So for now, keep sending me your leads. I will let everyone know when we find the next site for Loving Paws LLC.

I wish you all a very wonderful holiday season. May you have a happy, healthy, and prosperous New Year. I thank you for letting Loving Paws be part of your life; it is a honor to work with all of you and I look forward to providing quality services for you and you furry four legged friend in 2009. God bless you all.
-Laura Yurchak



Kenosha is blessed with a wonderful Humane Society. Their staff really cares about the pets at the shelter. I was so lucky to have received their help recently when finding my Tasha.

Safe Harbor Humane Society gets hit hard during rough economic times. I know that your support is extremely helpful and deeply appreciated. The list below is what they need to help the animals in their care. I am setting up a spot at the

Loving Paws building for you to drop off any donation you can make. Everything will be brought to the Humane Society on December 18th.

- Cash donations
- Bleach
- Purina Kitten Chow
- Purina Puppy Chow
- Toilet paper
- Dish soap
- Cat toys
- Nylabone dog toys
- Copy paper (8.5x11)
- Liquid laundry soap
- Cat treats
- Dog treats
- Paper towels
- Pine Sol (lemon, blue, green)
- Petco gift card
- Petsmart gift card
- Office Max gift card
- Gas gift card
- Wal-Mart gift card
- Postage stamps
- Letter size file folders
- Q-tips



Loving Paws has Pet First Aid Kits that we are selling for Safe Harbor. These kits originally sold for \$29.95 but we are selling them for \$5.00 each. There are a few things that have expired in the kit but a good friend and pharmacist said that only one item in the kit should be tossed out. The kits are going fast, so please stop in the training center or call Laura to reserve yours today.

NEW PET NEWS

There is a new pet resort in Kenosha County in the township of Paris called Woofman's Lodge. If you are looking for a boarding facility for the holidays, give them a call at 262-857-9966 or check out their webpage at www.woofmans.net.

Lori Mendelsohn Thomas provides individualized pet care services ranging from pet sitting, dog walking, transportation and anything in-between. You can contact Lori at 262-762-0823. You can also pick up a business card at Loving Paws.

Pet Safety During the Holidays

By Jennifer Lueck

The best prevention for mischievous young dogs is 100% supervision, especially around the holidays when new and interesting things are introduced into your dog's environment. Dogs have no concept of monetary or sentimental value; everything's a chew toy to them until they are taught otherwise. From a dog's point of view, those shiny round things hanging from the cool new indoor tree look like fun toys.

Below are some tips to help you keep your dog safe during the holidays

- Many holiday plants can lead to health problems when ingested by dogs. Make sure to keep these plants out of reach of curious canines: mistletoe, holly, poinsettias and lilies.
- Snow globes often contain antifreeze, which is poisonous to pets.
- If you purchase a real tree for decorating, do not allow your dog to drink the tree's water as it may contain residual fertilizers.
- Keep ornaments and tinsel out of reach of your dog. Ornaments can break easily and ingested glass could result in a life-threatening emergency. Ingested tinsel can cause an intestinal blockage.
- Make sure the power cords for your tree's lights are taped down or well covered so your dog cannot chew the cords and risk electric shock.
- If you choose to give your dog holiday turkey, make sure it's boneless. Cooked poultry bones can splinter and cause major problems when ingested.
- If you have houseguests for the holidays, make sure your guests are aware of your dog when entering or exiting the house so he does not get loose. You should also inform your houseguests of the foods to avoid feeding the dog and let the guests know about the rules you have set for your dog. The holidays are a perfect time to practice exercises to teach your dog not to jump on people.
- Dog costumes are fun to put on our dogs, but remember that they should only be worn when supervised by a human.
- Remember to wipe your dog's paws after taking him for a walk where ice-melting salt has been applied.

Top 5 Foods to Avoid Feeding Your Dog

By Jennifer Lueck

If ingestion of any of these items occurs, please note the amount ingested and contact your veterinarian or the ASPCA Animal Poison Control Center at (888) 426-4435 immediately*.

1. Chocolate

The amount of chocolate that is dangerous depends on the weight of the dog and the type of chocolate. Baking chocolate and cocoa powder are the most dangerous, while white chocolate is the least dangerous. Want to find out how much chocolate is too much for your dog? Check out National Geographic's Interactive Chocolate Chart: <http://ngm.nationalgeographic.com/2007/10/pets/chocolate-chart-interactive>

2. Macadamia Nuts

Macadamia nuts can cause weakness, depression, vomiting, tremors and hyperthermia in dogs.

3. Grapes & Raisins

Grapes and raisins have been known to cause kidney failure in dogs when eaten in large quantities.

4. Xylitol

Xylitol is an artificial sweetener in many products, such as chewing gum, candy, baked goods and toothpaste. Xylitol causes insulin release, which can lead to liver failure.

5. Onions, Garlic, Chives

These vegetables can cause gastrointestinal irritation and could lead to red blood cell damage. An occasional low dose will most likely not cause a problem, but they should not be fed in large amounts.

In addition to these five, the ASPCA's Animal Poison Control website lists five additional people foods that should not be fed to pets: alcohol, avocado, yeast dough, milk and raw/undercooked meat, eggs and bones.

*There is a \$60 fee for calling.



Lost Dog: What to do if your dog goes missing

By Amy Wence

The thought of your dog getting loose and going missing is every pet owner's nightmare. You may think it could never happen to you, but it happens more often than you may realize. Unfortunately, it is not always within your control. Your dog can become lost when unforeseen things happen...like collar or leash failure, car accidents, natural disasters, fires, doors and gates left open, etc.

It can even happen to dog professionals. It was a Saturday afternoon, not too long ago, when I got a frantic call from Laura that her 16 year old border-collie mix, Tasha, had gone missing. Her husband had accidentally left the yard gate open and then let Tasha out through the sliding glass doors, not realizing that she could walk right out of the backyard. Once it was realized that Tasha had wandered off, a team of people quickly gathered and started scouring the neighborhood. We asked everyone we saw if they had seen her. We searched until dark, when finally Laura got the call from animal control that Tasha had been found. A lady had Tasha in her backyard, but was not able to contact Laura directly because Tasha had not been wearing her collar at the time she went missing. Luckily, the woman called animal control and they were already aware that Tasha was missing, so they called Laura immediately. Tasha was brought to the humane society where Laura was reunited with her. Tasha was unharmed, but was incredibly exhausted from the ordeal. Although this experience ended positively, there is still a lot to be learned from it. Should such an unfortunate event occur to you, there are a number of precautions that can be taken to ensure that you are prepared and that your dog can be recovered as quickly as possible.

Before your dog gets lost

- **Identification:** This is an absolute must! Your dog's collar should have ID tags with at least two, preferably three, contact numbers. You can also order collars with your phone number stitched into them. If your dog is an escape artist or likes to dart out of doors, then it is advised that he wear ID at all times, even indoors. However, if your dog should get loose without his collar, microchips are an excellent back up means of identification. Microchip implanting is a very minor procedure and very inexpensive. Lastly, be sure to keep all contact information up to date on both the ID tags and with the microchip registry.

LOST DOG



TASHA

- **Shelters:** Find and store the contact information for animal control and all of your local animal shelters. It is a good idea to find out how long your local animal shelters will hold stray dogs. Keep a list by your phone of the addresses, telephone numbers, and holding times of each shelter, so you are not looking them up in a panic.
- **Flyers:** Make a stack of emergency fliers with your dog's photo and your contact information to hand out immediately if he gets lost. Offer a reward on the flier and keep them in a safe place for possible future use.
- **Training:** A good recall is very important. "Chase me" is a great game to teach your dogs and can come in handy if your dog ever gets away from you. You can also buy a whistle, and teach your dog to associate the sound with a reward of very high value, such as chicken. This can be an invaluable tool for emergencies.
- **Safety:** Check the perimeter of your fencing regularly for any possible routes of escape. Also, it may be a good idea to put locks on the yard gate to avoid accidental release. A common cause for escape is when service men leave the gate open. A "Dog on Premises" sign may be helpful in this case.
- **Print out and fill out the card on page 5 with the information for your area. Cut it out and put it in a place where you can find it easily in an emergency, such as on the refrigerator or by your phone.**

After your dog gets lost

- Immediate Action: Don't panic. Get busy! Enlist the help of family and friends to begin the search immediately. Bring your whistle, emergency fliers, treats, and your dog's favorite squeaky toy. If your dog has any canine friends, take them along too. Split up and search within a 2-3 mile radius. Handout the fliers to residents, mail carriers, children, and anyone else you may see. Ask everyone you see if they have seen your dog.
- Work the Phones: During the search, it is wise for someone to stay at the house in case the dog should return. This person can use the time to call animal control and the local animal shelters to inform them that your dog is missing. This person should be able to provide detailed information about your dog such as, name, sex, age, breed type, weight, color and distinctive markings. It may also be a good idea to call any local veterinary hospitals should someone bring your dog in if it has been injured.
- Fliers: Use a scanner to scan the photo and create the flyer. If you do not have a digital photo or scanner, print out the poster leaving room for the photo, then take the poster and photo to a copy shop. Make as many copies as possible. The flyer should be a simple format with large type and a color photo of your dog. It should include only key details

Area Served	Description	Address	Phone Number
City of Kenosha	Safe Harbor Humane Society	7811 60th Avenue Kenosha, WI	(262)694-4047
City of Kenosha	Police Non-Emergency (ask for Animal Control)	N/A	(262)656-1234
Kenosha County	Society of St. Francis Humane Society	12300 116th St Kenosha WI	(262)857-7260
Kenosha County	Police Non-Emergency (ask for Animal Control)	N/A	(262)653-6600
Pleasant Prairie	Police Non-Emergency (ask for Animal Control)	N/A	(262)694-7353
City of Racine	Police Non-Emergency (ask for Animal Control)	N/A	(262)635-7700
Racine County	Countryside Humane Society	2706 Chicory Road Racine, WI	(262)554-6699
Lake County, IL	Lake County Animal Care and Control	29278 N. Highway 83 Mundelein, IL	(847) 949-9925
Lake County, IL	Orphans of the Storm	2200 Riverwoods Rd Deerfield, IL	(847) 945-0235
Lake County, IL	Save-a-Pet Adoption Center	31664 North Fairfield Rd Grayslake, Illinois	(847)740-7788
Waukegan	Waukegan Animal Control Division	1698 N McAree Rd Waukegan, IL	(847)599-2690

and preferably two contact numbers. Post your fliers everywhere (pet supply stores, groomers, gas stations, restaurants, veterinary offices, grocery stores, around schools, etc.)

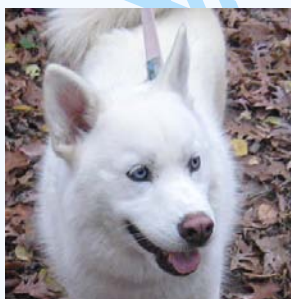
- Call the newspapers and place "lost dog" ads.
- Call your local radio station to see if they will make an announcement about your lost pet.
- Check in with your local shelters and animal control department at least every other day. It is also a good idea to visit the animal shelters in person.
- Use lost pet posting sites on the Internet.
- Enlist the help of a lost pet specialist or pet-finding service. These are professionals trained in finding lost pets.
- Most importantly, don't give up! Many lost animals eventually find their way back home.

GRADUATES HIKING CLUB

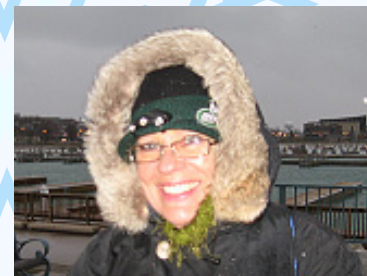
Winter is here, but that won't stop the Hiking Club! In fact, we had eight dogs (and their owners) brave the sleet and strong winds at the Marina on Sunday. The weather was miserable but somehow we managed to have a good time. I think it was the quickest 2-mile hike in the history of the Hiking Club!



Hiking at Parkside's Cross Country Course



Skye laughing at the cold humans at Lake Andrea on Thanksgiving.



Charlie's mom (Kathy) all bundled up and enjoying the "beautiful" weather I promised we'd have at the Marina

The Hiking Club is free for graduates of Loving Paws. If you're not already a member and would like to sign up, just email Jennifer at jenn_web@lovingpawslc.com. Please include your name and your dog's name in the email. Invitations with the time and location for our weekly hikes are sent out through evite.com.

Fair weather hikers: if you would like to be removed from the evite list until after your winter hibernation, just let me know. 😊

-Jennifer & Casey



Emergency Dog Contacts

Medical

Veterinarian _____
Emergency Veterinarian _____
Poison Control (888)426-4435 _____

Lost Dog

Humane Society 1 _____
Humane Society 2 _____
Police (non-emergency) _____